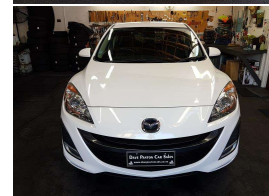


2010 Mazda AXELA



VEHICLE INFORMATION

Cash Price

Includes GST,
Registration &
Licensing

\$13,995

Finance this vehicle
from only

\$69.07

per week*

Total Amount Payable
\$17,865.93



Gain peace of mind
with Mechanical
Breakdown Insurance.
Ask us how.

Body

5 door, Hatchback

Odometer

48,450 km

Engine

1500 cc

Fuel Type

Petrol

Transmission

Automatic (Tiptronic)

Wheels

-

VIN

-

Reg No.

-

Ext Colour

White

History

-

Seats

5 seats, Cloth

Interior

Black

Audio

CD Player

Stock ID

1532

Exterior Features

- » Electric Mirrors (Retractable)
- » Professionally Groomed
- » Rear Wiper
- » Spoiler
- » Spot Lights
- » Tints

Interior Features

- » Airbags
- » Child seat anchor points
- » Climate Control
- » Electric Windows
- » Keyless Entry
- » Remote Locking
- » Smart Key

Mechanical Features

- » ABS Braking
- » Chain Driven (No Cambelt)
- » Immobiliser
- » Power Steering



Dave Panton Car Sales, Phone 06 650 5461, Email sales@davepantoncars.co.nz
355 Gloucester Street, Taradale, Napier 4112, New Zealand
www.davepantoncars.co.nz

* Finance calculation based on a 208 week term, 25% deposit and with an example annual fixed interest rate of 12.95%. Actual interest rate may be higher or lower. Includes an establishment fee of \$407.00 and a monthly maintenance fee of \$8.00. Full term total amount payable of \$17,865.93. Estimate only, not an offer of finance. Terms, conditions and lending criteria apply.